

12/2018

Primary Health Care  
<http://www.bristol.ac.uk/primaryhealthcare>



@capcteaching

## Teaching Newsletter

Bristol Medical School, 1st Floor, 5 Tyndall Avenue, Bristol, BS8 1UD  
Tel: 0117 42 82987  
phc-teaching@bristol.ac.uk

Merry Christmas  
from all of us in Primary Care

Exciting news for Primary Care!

### MB21 Year 3 coming on stream in 2019-20

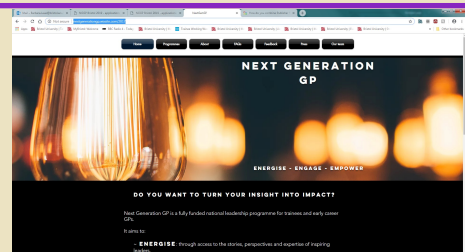
32 Primary Care sessions—4 times the number in MB16. Are you ready for the challenge? Would you and your practice like to be part of this exciting change? **More on pages 2-4**

**Could you help?** We are looking for **new learning experiences for our fifth year students**. Please go to **page 2** to find out how

### Next Generation GP in Bristol 2019

A free programme seeking to inspire emerging future leaders in General Practice, open to GPs and GP trainees across the South West. More info here  
<http://nextgenerationgp.wixsite.com/2017>

**Hurry, must apply by 4th December**



### CPD opportunity for you

**Integrative Medicine**—Want to find out how it could enhance your patient care? Need more CPD? Want some evidence based information and spend time with like minded colleagues? This workshop could be for you

**New Ways Forward in Mental Health and Optimum Health in Later Life**

8th February, Engineers' Hse, Clifton, Bristol

Read more on page 5

### Research at the Centre for Academic Primary Care

**New study into reducing antibiotic use for ear infections** Read more here

<http://www.bristol.ac.uk/primaryhealthcare/news/2018/rest-study-announcement.html>

If you and your colleagues are interested in taking part, please contact

[kathryn.curtis@bristol.ac.uk](mailto:kathryn.curtis@bristol.ac.uk)

12/2018

Primary Health Care  
<http://www.bristol.ac.uk/primaryhealthcare>



## MB21 Year 3 coming on stream in 2019-20

We are very excited to be able to reveal more detail about year 3 MB21!

Starting in **September 2019**, year 3 medical students will get **32 sessions of general practice** - significantly more than the current 8. The style of teaching also represents a change from previous years. We have tried to build on the strengths of the current year 3 whilst introducing new elements such as consulting with 'undifferentiated' patients, a 'simulated surgery', and workshops which will include observed history taking and examination with patients, as well as elements such as a 'skill of the week'.

Here is a **Quick Reference Guide** that gives you more detail about MB21 year 3, including the teaching dates for year 3 in the 2019-20 academic year. As we continue to develop year 3 MB21 we will add further information to the year 3 MB21 page of the website

<https://www.bristol.ac.uk/primaryhealthcare/teaching/mb21-curriculum-review/year-3-mb21/>

We hope to start recruiting practices in late Spring 2019

We're really excited about our new programme of teaching in the community, and owe a big debt of thanks to all the current year 3 GP teachers and students who have been involved in the development of this so far. As always, it's great to be part of such an enthusiastic community of teachers!

Simon Thornton and Ciaran Conway  
Year 3 MB21 Co-leads

## We are looking for new Year 5 learning opportunities...

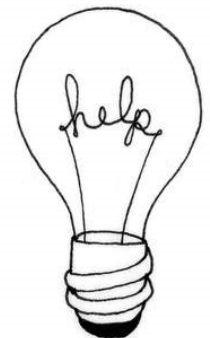
**Do you know or work with any local charities that may be interested in hosting Year 5 medical students or do you have a social prescriber attached to your practice? We would love to hear from you....**

As part of MB21, the new medical school curriculum, Year 5 medical students will spend half a day a week during their 9 week GP attachment volunteering in a third sector organisation. Whilst these charities will benefit from having volunteers and increasing the awareness of their work, the students will learn about how different organisations contribute to the health and wellbeing of the local community and understand more about social issues affecting the communities in which they work.

Bristol Hub is working in partnership with the Bristol Medical School to place students in third sector organisations. Bristol Hub is a member of the registered charity Student Hubs that is striving to achieve its vision that every student engages with social and environmental challenges during their time at university, empowering them to become active citizens for life.

**We are piloting this placement this academic year.** The students will spend half a day every Wednesday during their 3 or 4 week GP placement at a local charity. This means that the students will have 3 or 4 sessions with the local charity.

We are looking to expand our database of third sector organisations that would benefit from student volunteers. If you know of charities in your area that we could partner with or work with a social prescriber, please send their details to Abhi Vora (Social Impact Placements Manager, [Med-3rdsectorplacements@bristol.ac.uk](mailto:Med-3rdsectorplacements@bristol.ac.uk) )



# Year 3 General Practice Placement

## Quick Reference Guide

For more information on each year, visit our website: <https://www.bristol.ac.uk/primaryhealthcare/teaching/>

GP3

.....

In year 3, students have 16 days in general practice on Tuesdays. This placement consists of two blocks, each of eight whole days in a practice. Each day in practice is themed, linking closely with student's learning in secondary care. At the end of each placement, students will take part in a 'simulated surgery' at the local academy, facilitated by the GP.

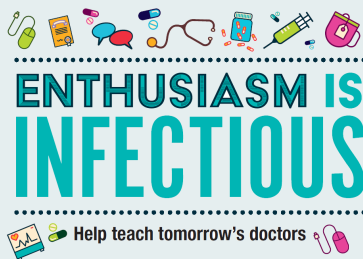
.....

### How the placement works

Each day in practice is split into a workshop in the morning with 6 students, facilitated by the GP teacher. In the afternoon, two students take part in a teaching surgery and the other four students undertake their People, Populations and Practices (PPP) project.

### Workshops

Each workshop is themed and has a detailed tutorial guide. As part of each workshop, we would expect you to bring at least one patient in relevant to that day's theme.

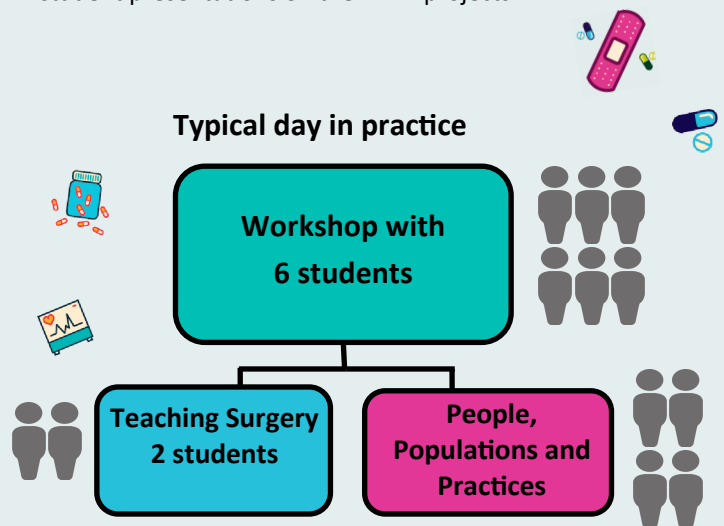


Suggested Summary Timetable	
08:30 -10:00	GP Preparation time
10:00 -13:00	Workshop
14:00 -17:00	Teaching surgery/PPP

### Academy Day

On the final day of each block, students will take part in a simulated surgery at the academy. The GP tutors will help facilitate the session. After lunch there will be a series of brief student presentations on their PPP projects.

### Typical day in practice



### Year 3 Key Facts

- Tuesdays
- 16 days over the year
- 6 students per group
- £600-£650 per day



### Teaching surgery

Two students will join you for the teaching surgery. These should be unselected patients and an opportunity for the students to practice their consultation skills. We would like each student to consult a minimum of two times during each surgery so suggest x4 30 minutes appointments.

.....

### People, Practices and Populations (PPP)

The four students who aren't doing the teaching surgery will be doing PPP. We would like you to select a patient per pair of students for them to follow. They will visit at the start and end of the placement and in the time between will need access to two computers to review the patient records and access online teaching resources as pairs.



### Payment and packages

For teaching one block, the payment is £600 per day (£4,800 for the 8 day block). If your practice signs up to our Year 3 Teaching Package to deliver all 16 days (both Block A and B), the payment is £650 per day (£10,400 per placement). Different GPs can supervise Blocks A and B. For more information on packages, please see the CAPC Teaching website.



# Teaching Dates and Topics

## 2019-20

Block A		
Week	Date	Topic
1	17-Sep-19	Cardiovascular
2	1-Oct-19	Gastrointestinal 1
3	15-Oct-19	Neurology
4	29-Oct-19	Renal
5	12-Nov-19	Musculoskeletal 1
6	26-Nov-19	Ophthalmology and ENT
7	10-Dec-19	Emergencies in General Practice
8	7-Jan-20	Academy Day

Block B		
Week	Date	Topic
9	28-Jan-20	Respiratory
10	11-Feb-20	Gastrointestinal 2
11	25-Feb-20	Urology
12	10-Mar-20	Musculoskeletal 2
13	24-Mar-20	Dermatology
14	21-Apr-20	Gynaecology and Breast
15	5-May-20	Endocrine
16	19-May-20	Academy Day

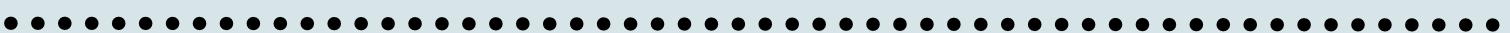


'Brother and Sister' by Sarah Wake, Year 1 Medical Student

Teacher Development
Year 3 Workshop TBC

Key
Practice based day
Academy Day

Year 3 Frequently asked questions	
Can more than one GP deliver the teaching?	Yes, although we would prefer no more than two regular teachers per block.
Can I change the timings of the day?	You can arrange this with the students. They must still receive a three hour workshop and further three hours of teaching surgery and check-in/out.
If I have a GP trainee, can they help?	Yes, we are inviting GP trainees to help facilitate the simulated surgery. They could also facilitate the morning workshops for one block.
Will material for the workshop be provided?	Yes, we will provide detailed material for running the workshop. Think of it as following a recipe, but feel free to innovate if you have your own ideas!



12/2018

Primary Health Care  
<http://www.bristol.ac.uk/primaryhealthcare>



@capcteaching

## Teaching Newsletter

Bristol Medical School, 1st Floor, 5 Tyndall Avenue, Bristol, BS8 1UD  
Tel: 0117 42 82987  
phc-teaching@bristol.ac.uk

### New Ways Forward in Mental Health and Optimum Health in Later Life.

Delivered by the National Centre for Integrative Medicine

[www.ncim.org.uk](http://www.ncim.org.uk)

This event aims to provide you with helpful information on how to best support patients with their mental health and general health in later life as well as improve your confidence in making complementary and lifestyle recommendations alongside your usual clinical or healthcare practice.

Designed for GPs wanting clinical and evidence-based updates within a broad vision of healthcare, there are 7 hours of valuable CPD with a great opportunity to meet and network with like-minded colleagues.

**When: Friday 8 February 2019 - 9:00am - 5:15pm**

**Where: Engineers' House, Clifton Down Road, Bristol BS8 3NB**

**Ticket Price: Early Bird: £40 half-day / £80 (early bird) full day.  
£100 after December 11 .2018.**

**Price includes refreshments, lunch and afternoon tea.**



**Book now!**

<https://www.eventbrite.co.uk/e/new-ways-forward-in-mental-health-and-optimum-health-in-later-life-tickets-52088123981>

